



TEREX

HR42

Compact Crawler Excavator

OPERATING WEIGHT	27,563 lbs (12,500 kg)
NET ENGINE POWER	94 hp (64 kW)
MAX DIG DEPTH	15' 4" (4.67 m)
MAX REACH	27' 2" (8.28 m)



COMPACT CRAWLER EXCAVATOR
HR42

Operating Data, Standard Equipment

Operating weight (monobloc boom) (SAE J 732)	27,563 lb (12,500 kg)
Undercarriage (steel crawlers)	+684 lbs (310 kg)
Total length in travel position (monobloc boom)	15' 4" (4.7 m)
Total height in travel position (monobloc boom)	18' 7" (5.7 m)
Transport dimensions:	
Monobloc boom (L x H)	23' 8" x 9' 5" (7.3 x 2.9 m)
Total width with dozer blade	8' 2" (2.5 m)
Total height (top of cab)	9' 5" (2.9 m)
Ground clearance	16" (420 mm)
Uppercarriage tailswing	4' 5" (1.4 m)
Uppercarriage front swing (monobloc boom)	8' 6" (2.6 m)
Working envelope, 180°	12' 10" (3.9 m)
Working envelope, 360° (monobloc boom)	17' 2" (5.2 m)
Breakout force (SAE J 1179)	18,338 lbs (81,500 N)
Ripping force (monobloc boom) (SAE J 1179)	13,725 lbs (61,000 N)
Ground pressure (rubber crawlers)	6.1 psi (0.43 daN/cm ²)
Ground pressure (steel crawlers)	6.3 psi (0.44 daN/cm ²)

*Standard equipment, may vary with different bucket.

Specifications

Engine	
Manufacturer, model	Deutz, BF 4 M 2012
Type	4-cylinder, turbocharged diesel engine
Combustion	4-stroke, direct injection
Displacement	246 in ³ (4.0 L)
Net power rating at 2,100 rpm (SAE J 1349)	94 hp (69 kW)
Cooling system	Water

Electrical System	
Nominal voltage	12 V
Battery	12 V / 135 Ah / 600 A

Power Transmission	
Hydrostatic drive with reduction gear. Gear-integrated multi-disc brake acting as parking brake, automatic hydraulically bled; 2-stage variable displacement motor, full power shift. Two speed ranges:	
Travel speed forward/reverse	0 – 1.7 mph (0 – 2.7 km/h) 0 – 3.4 mph (0 – 5.4 km/h)
Gradeability	> 60%
Drawbar pull	18,450 lbs (82 kN)
Travel motion alarm (acoustic signal) as standard fitting	

Undercarriage	
Maintenance-friendly crawler-type undercarriage with triple grouser plates or rubber crawlers. Idler suspension with hydraulic crawler tensioning.	
Rubber crawlers / steel crawlers	20" (500 mm)
Total length (sprocket/idler)	8' 6" (2.6 m)
Total length	10' 10" (3.3 m)

Dozer Blade	
Independent from drive train, sensitive control via hand lever, float position.	
Width	8' 2" (2.5 m)
Cut below ground	16" (400 mm)
Lift above ground	20" (500 mm)
Slope angle	35°

Steering	
Independent control of crawlers and counter rotation sensitive servo-control via pilot-operated foot pedals combined with hand levers.	

Swing System	
Hydrostatic drive with 2-stage planetary gear and axial piston fixed displacement motor also acting as a low maintenance break. In addition, an automatically controlled spring-loaded multi-disc brake acts as a parking brake when the pilot control lever is in neutral position.	
Swing speed	0 – 9 rpm



Fluid Capacities	
Fuel tank	50 gal (190 L)
Hydraulic system (including tank)	37 gal (140 L)

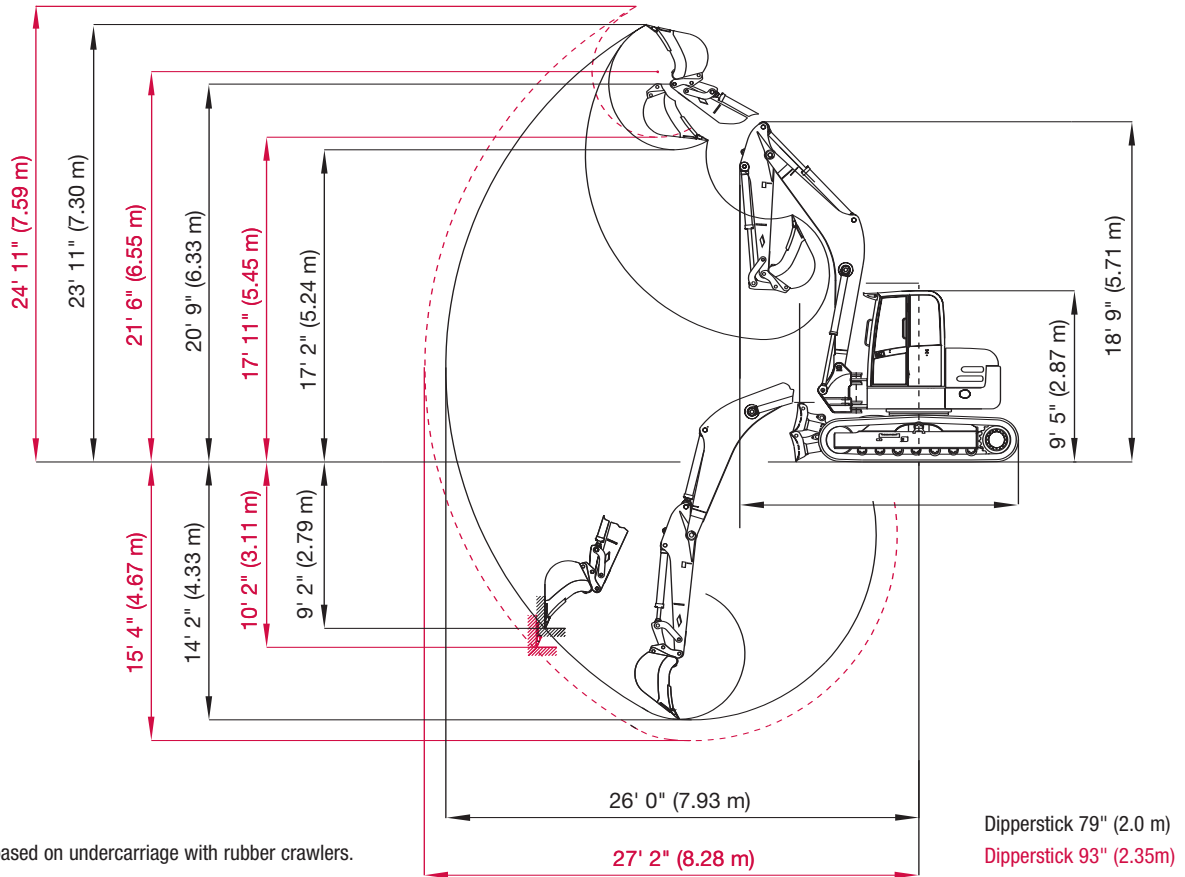
Hydraulic System	
Working hydraulics: Axial piston pump with load-sensing, coupled with a load-independent flow division (LUDV). Simultaneous, independent control of all movements. Sensitive maneuvers irrespective of loads.	
Pump capacity	42 gpm (158 Lpm)
Maximum working pressure	5,075 psi (350 bar)
Dual gear pump for all positioning and swing movements. Pressure cut-off valve for sensitive and energy-saving swing movements.	
Pump capacities	11 + 9.5 gpm (41.4 + 36 Lpm)
Maximum working pressure	3,335 psi (230 bar)
Control circuit for work attachments:	
Pump capacity	adjustable
Maximum working pressure	5,075 psi up to (350 bar)
Two servo-assisted four way control levers for excavator operations.	

Knickmatik®	
Boom offset to provide lateral parallel adjustment at full digging depth.	
Angle of artic./ lateral adjustment left	55°/2' 8" (55°/ 855 mm)
Angle of artic./ lateral adjustment right	55°/3' 3" (55°/ 995 mm)

Cab	
Sound-insulated, full-vision steel cab. Safety glass windows. Thermo windows tinted in green. Left-hand outside rear-view mirror. Cab heating through hot water heat exchanger and separate windshield defroster. Pneumatically cushioned comfort seat with armrests, longitudinal, height, and backrest adjustments. Operator control levers adjustable in longitudinal position. Instrument panel that contains three gauges and six warning lights.	
Working floodlight Halogen H-3.	
Noise emission ambience LWA	103 dB (A)
Noise emission cab LpA	80 dB (A)
Measured in dynamic measuring cycle (EEC-directive 2000/14).	

* Optional FOPS approved skylight guard available.

Working Ranges & Dimensions: Monobloc Boom



*All dimensions are based on undercarriage with rubber crawlers.

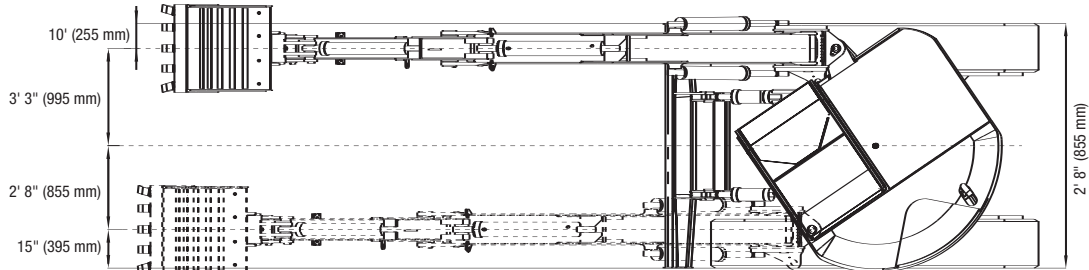
Lifting Capacities: 79" (2.0 m) Dipperstick

Bucket hinge pin height	Load radius from the center of the ring gear									
	10' 6" (3.2 m)		13' 1" (4.0 m)		16' 5" (5.0 m)		19' 8" (6.0 m)		21' 8" (6.6 m)	
	End	Side	End	Side	End	Side	End	Side	End	Side
9' 10" (3.0 m)										
Supported by blade	10.6 (4.80)	4.5 (2.06)	7.9 (3.58)	7.4 (3.36)	6.7 (3.02)	5.0 (2.28)	6.1 (2.78)	3.7 (1.70)	12.5 (5.68)	3.3 (1.48)
Traveling	6.9 (3.15)	–	7.8 (3.53)	7.2 (3.28)	5.1 (2.32)	5.0 (2.26)	4.5 (2.03)	3.7 (1.69)	3.0 (1.37)	3.2 (1.46)
4' 11" (1.5 m)										
Supported by blade	15.9 (7.19)	8.6 (3.90)	11.7 (5.32)	6.3 (2.86)	8.6 (3.90)	4.5 (2.03)	7.1 (3.25)	3.5 (1.60)	6.5 (2.93)	3.0 (1.36)
Traveling	10.2 (4.66)	8.4 (3.83)	7.8 (3.53)	4.6 (2.07)	5.7 (2.60)	4.6 (2.07)	4.4 (1.98)	3.6 (1.62)	3.6 (1.65)	2.9 (1.33)
0										
Supported by blade	16.1 (7.30)	8.9 (4.02)	13.0 (5.91)	5.8 (2.65)	10.0 (4.53)	4.4 (1.98)	6.5 (2.87)	3.3 (1.51)	7.1 (3.20)	2.9 (1.32)
Traveling	10.4 (4.70)	8.6 (3.92)	7.1 (3.21)	5.7 (2.59)	5.3 (2.41)	4.3 (1.95)	2.5 (1.14)	3.3 (1.48)	3.6 (1.64)	2.9 (1.30)
- 2' 4" (- 0.7 m)										
Supported by blade	15.0 (6.84)	8.1 (3.67)	14.0 (6.37)	6.0 (2.74)	9.7 (4.40)	4.3 (1.95)	8.1 (3.69)	3.4 (1.52)	7.4 (3.37)	3.0 (1.37)
Traveling	9.8 (4.45)	8.0 (3.62)	7.2 (3.26)	5.8 (2.61)	5.6 (2.34)	4.2 (1.91)	3.9 (1.77)	3.3 (1.50)	3.5 (1.57)	3.0 (1.34)

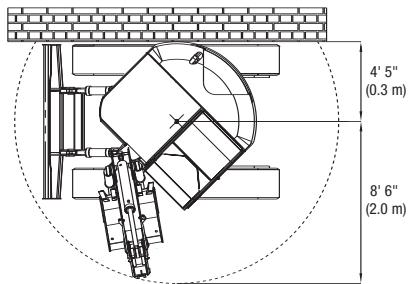
The above loads (all values in lbs x 1,000 resp. metric tons) are in compliance with SAE J 1097. They do not exceed 87% of hydraulic lifting capacity or 75% of tipping capacity. In each case, the smaller value is indicated. All values were determined with load hook. In the event of an attached bucket the difference weights bucket minus load hook must be deducted from the permissible payloads. When used for crane operations, excavators must be equipped with hose-rupture safety valves and overload warning device. Working equipment: Rubber crawlers, monobloc boom, dipperstick 79" (2.0 m).

Compact Crawler Excavator HR42

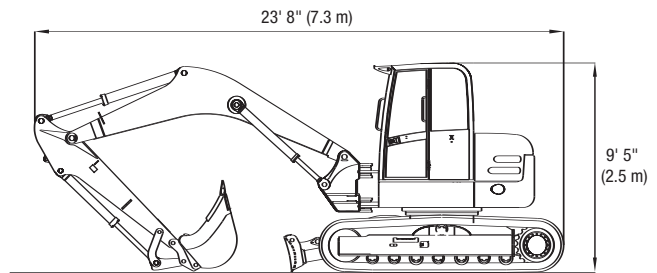
Excavation within the Entire Machine Width - No Repositioning of Machine



Swing Circle - Top View



Transporting Position



Optional Accessories

- Additional control circuit for hydraulic hammer
- Quick-change adapter for hydraulic hammer
- FOPS skylight guard
- Hose rupture safety valves for intermediate boom/dipperstick
- Filling with biodegradable hydraulic oil, ester-based VI68
- Electrical tank refueling pump
- Set of working floodlights (cab-mounted, front & rear)
- Immobilizer (anti-theft device)

Optional Clamshell Grabs

	Width	Capacity
GS 3325	12.8" (325 mm)	5.3 ft ³ (150 L)
GS 3400	16" (400 mm)	7.1 ft ³ (200 L)
GS 3500	20" (500 mm)	8.8 ft ³ (250 L)
GS 3600	24" (600 mm)	11.5 ft ³ (325 L)

Optional Buckets (Mounted on QAS, Mechanical)

	Width	Capacity
Tapered bucket	14" (350 mm)	4.6 ft ³ (130 L)
Tapered bucket	18" (450 mm)	6.2 ft ³ (175 L)
Bucket with ejector	14" (350 mm)	5.1 ft ³ (145 L)
Bucket with ejector	18" (450 mm)	7.1 ft ³ (200 L)
Bucket	24" (600 mm)	8.8 ft ³ (250 L)
Bucket	30" (750 mm)	11.7 ft ³ (330 L)
Bucket	36" (900 mm)	14.5 ft ³ (410 L)
Bucket	39" (1,000 mm)	15.9 ft ³ (450 L)
Ditch-cleaning bucket	4' 11" (1,500 mm)	10.6 ft ³ (300 L)
Swing bucket, 2 x 40°	4' 11" (1,500 mm)	9.2 ft ³ (260 L)



TEREX Construction Americas

8800 Rostin Road
Southaven, MS 38671
USA

TEL 662-393-1800
SALES 866-837-3923
PARTS & TECH SUPPORT 888-201-6008
FAX 662-393-1700
EMAIL sales@terexca.com
WEB terexca.com

For more information, product demonstration, or details on purchase, lease and rental plans, please contact your local TEREX Distributor.

Effective date: October 1, 2005. For further information, please contact your local distributor or the TEREX sales office listed. Product specifications are subject to change without notice or obligation. The photographs and drawings in this brochure are for illustrative purposes only. Refer to the appropriate Operator's Manual for instructions on the proper use of this equipment. Failure to follow the appropriate Operator's Manual when using our equipment or to otherwise act irresponsibly may result in serious injury or death. Prices and specifications subject to change without notice. The only warranty applicable is the standard written warranty applicable to the particular product and sale. TEREX makes no other warranty, expressed or implied. Products and services listed may be trademarks, service marks or trade-names of TEREX Corporation and/or its subsidiaries in the USA and other countries and all rights are reserved. "TEREX" is a Registered Trademark of TEREX Corporation in the USA and many other countries. Copyright ©2006 TEREX Corporation