



Proven Solutions



LANDOLL 334/336
CAR CARRIER

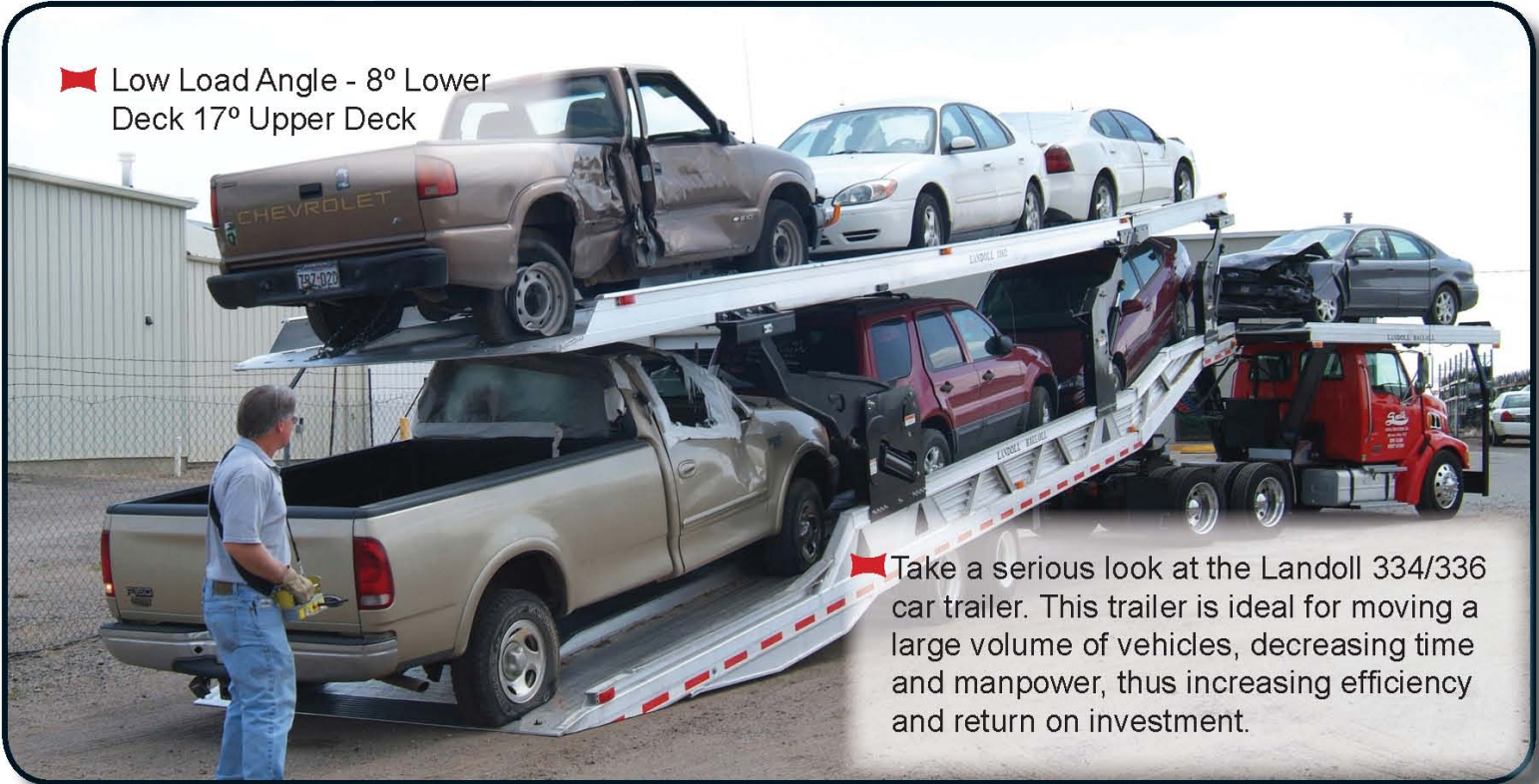




Investing In The Future...

HIGH VOLUME.....EFFICIENT.....

Low Load Angle - 8° Lower Deck 17° Upper Deck



Take a serious look at the Landoll 334/336 car trailer. This trailer is ideal for moving a large volume of vehicles, decreasing time and manpower, thus increasing efficiency and return on investment.

Dump Angle - 18° Lower Deck, 28° Upper Deck



Landoll 334/336

DURABLE.....MANEUVERABLE



➤ Rugged Guide Rails on Lower and Upper Decks



➤ The Adjustable Upper Deck Allows for Easy Transition from Trailer to Overcab



➤ Cordless Hydraulic Controls



➤ Hydraulic Adjustable 24" Vertical Travel



➤ Manual Hydraulic Controls



➤ Tilt Cylinder - Major Steel Components Powder Coated

Standard & Optional Equipment/Features

Model 334 (4 car) / 336 (6 car) Car Carrier

S=Standard O=Optional

Model		334	336
Main Frame	Full Aluminum Extrusion Heat Treated	S	S
Crossmembers	9" Aluminum Floor Plate with Extruded Integral Crossmembers on 3" Centers	S	S
Parking Stands	Pin Drop	S	S
Axles	1-25,000# Dual Tire, Oil Bath Bearings 2-25,000# Dual Tire, Oil Bath Bearings	S	S
Suspension	Neway RLU228 Air Ride 22,500# Capacity	S	S
Brakes	12.25x7.5 Full Air Spring Brake ABS, 2S1M 12.25x7.5 Full Air Spring Brake ABS, 4S2M	S	S
Pin Setting	34" 15"	S	S
Swing Clearance	55" 75"	S	S
Width	102"	S	S
Length	35" 48"	S	S
Tie Downs	8 "D" Rings-6 Key Holes on Each Approach	S	S
Color	Metal Parts Powder Coated Black	S	S
Hydraulic Winch	4-Worm Gear 8,000# with 85' 3/8" Cable 6-Worm Gear 8,000# with 85' 3/8" Cable Winch Deduct-Per Winch-Maximum of Two May Be Deducted	S O	S S
Top Deck Adjustment Cylinder	4 Rephase for Level Lift 6 Rephase for Level Lift	S	S
Load Angle	Minimum 8° Lower Deck Minimum 17° Upper Deck Maximum 18° Lower Deck Maximum 28° Upper Deck	S S S S	S S S S
Upper Deck	Hydraulic Adjustable 24" Vertical Travel with Safety Lock on 2" Increments	S	S
Hydraulic Controls	Wireless Remote on Manual Controls on all Functions with Hand Held Control Box and Shoulder Strap	S	S
Over the Cab Installation	One Car Over Cab can be Installed on a Variety of Trucks (Contact Factory). Others Subject to Surcharge. Installation of One Car Over Cab on Other than Above Chassis Installation of Safety Buzzer-In Cab for One Car Over Cab	O	O O O
Accessories	Left Hand Tool Box In-Cab Holder Control Box with Safety Buzzer Automatic Slack Adjusters Bridle Adapter Plate (each) Combination Chain (each)	S S S O O	S S S O O



Maximum Clearance 81"



One Winch per Vehicle Upper and Lower Deck



Adequate Clearance on Wide Variety of Vehicles

*Capacity ratings are frame capacities only. Actual load capacities may be restricted by factors such as gross axle weight ratings (GAWR) or state and federal regulations.

